

2.71 Repeat Problem 2.69 using CD Module 2.9.

Solution: Figures P2.71(a) and (b) provide the following solutions:

$$d_1 = 0.1988\lambda,$$

$$\ell_1 = 0.125\lambda,$$

$$d_2 = 0.375\lambda,$$

$$\ell_2 = 0.375\lambda.$$

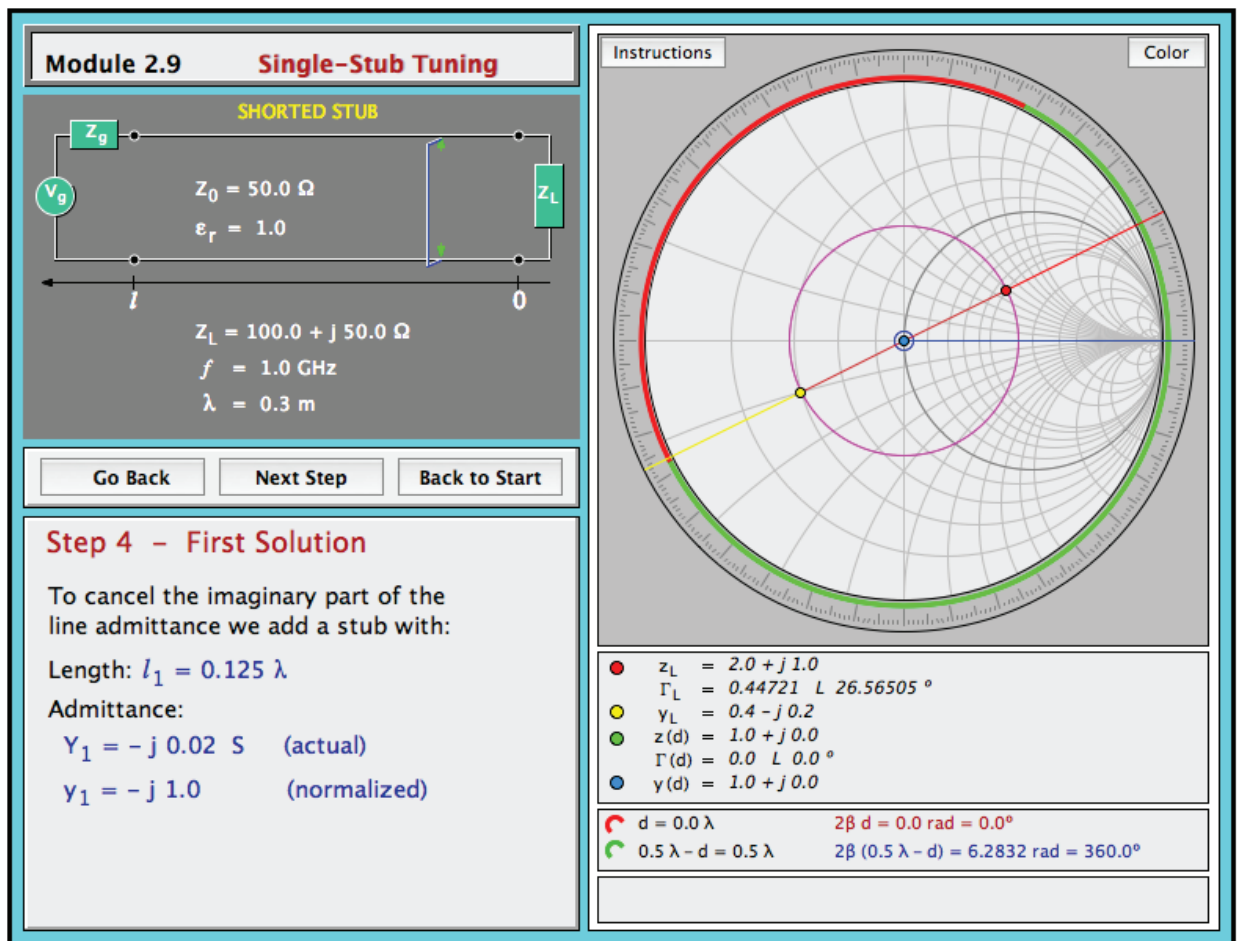


Figure P2.71(a)

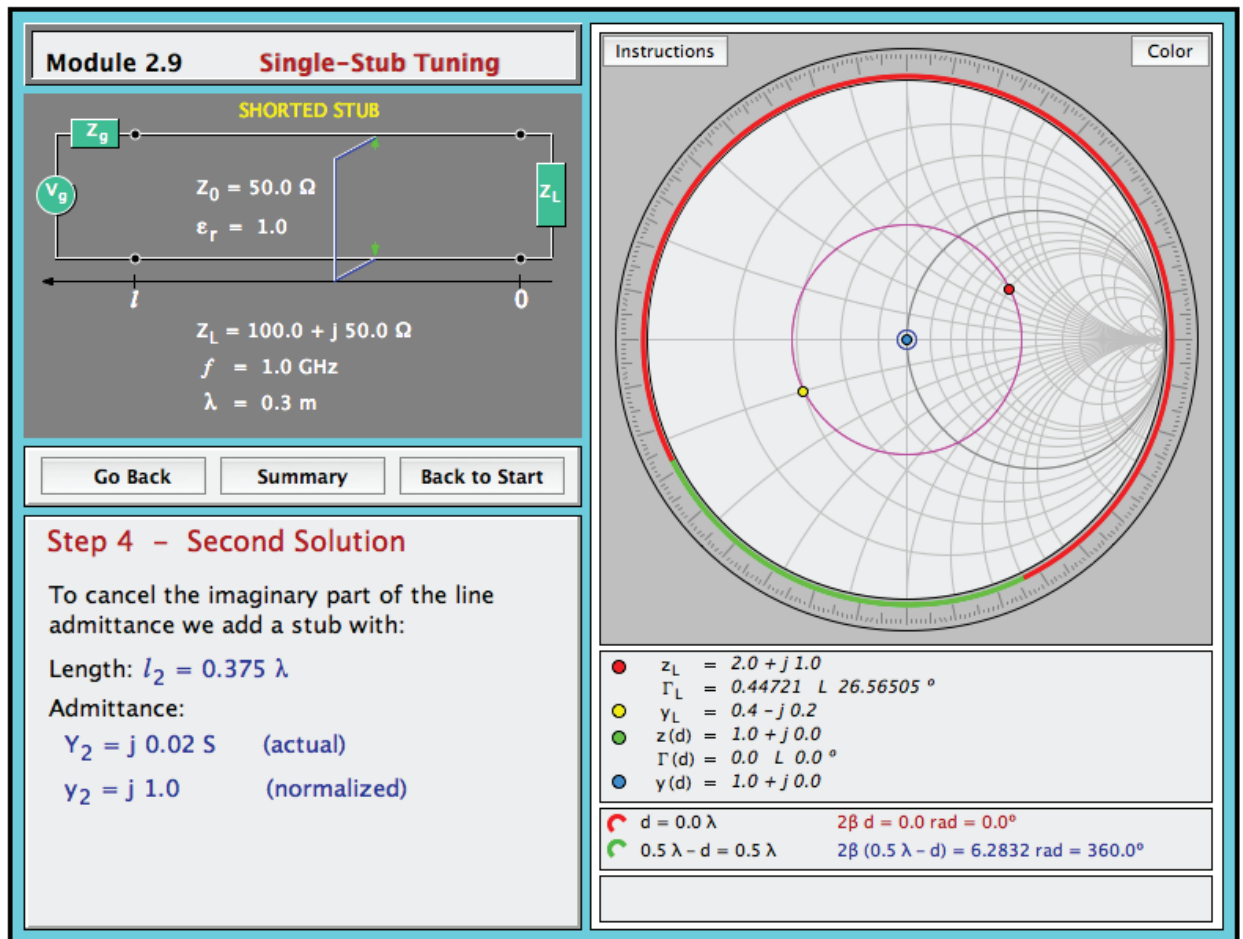


Figure P2.71(b)