

**Problem 2.71** Repeat Problem 2.69 using CD Module 2.9.

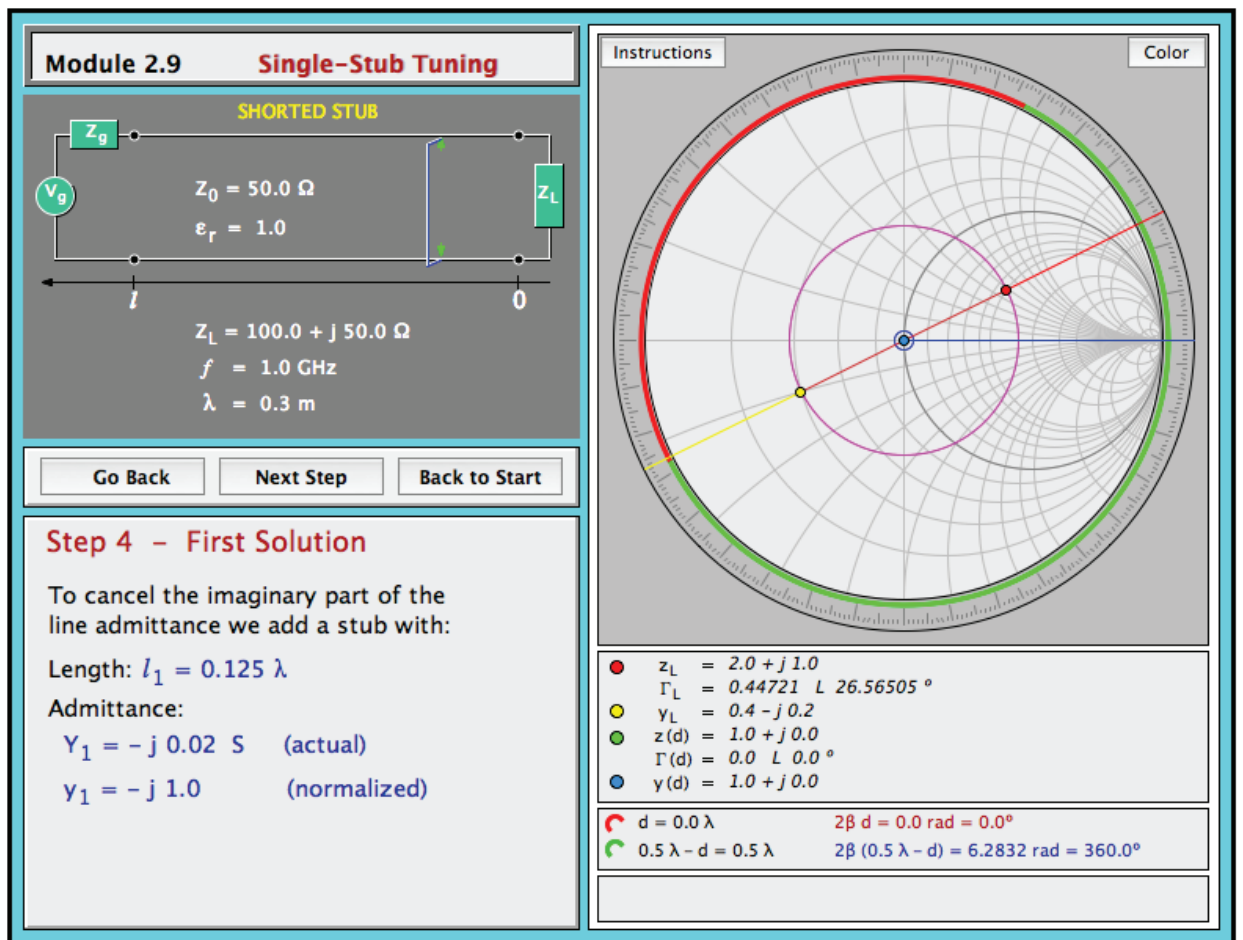
**Solution:** Figures P2.71(a) and (b) provide the following solutions:

$$d_1 = 0.1988\lambda,$$

$$\ell_1 = 0.125\lambda,$$

$$d_2 = 0.375\lambda,$$

$$\ell_2 = 0.375\lambda.$$



**Figure P2.71(a)**

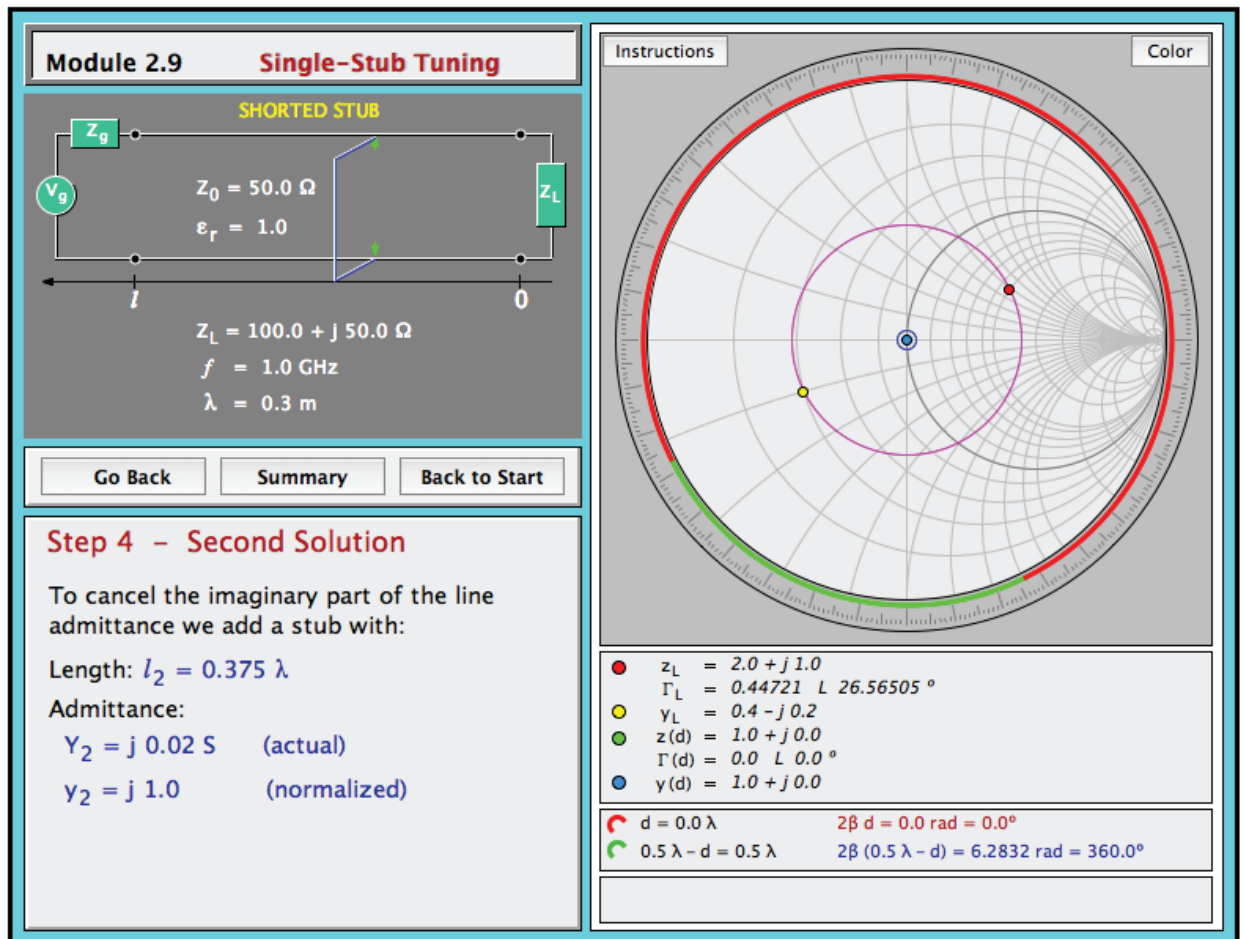


Figure P2.71(b)