

Problem 9.33 If the antennas in part (a) of Problem 9.32 are parallel, vertical, Hertzian dipoles with axes along the x -direction, determine the normalized radiation intensity in the x - z plane and plot it.

Solution: The power density radiated by a Hertzian dipole is given from Eq. (9.12) by $S_e(\theta') = S_0 \sin^2 \theta'$, where θ' is the angle measured from the dipole axis, which in the present case is the x -axis (Fig. P9.33(a)).

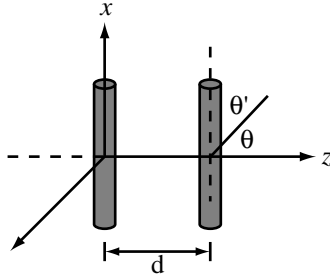


Figure P9.33: (a) Two vertical dipoles of Problem 9.33.

Hence, $\theta' = \pi/2 - \theta$ and $S_e(\theta) = S_0 \sin^2(\frac{1}{2}\pi - \theta) = S_0 \cos^2 \theta$. Then, from Eq. (9.108), the total power density is the product of the element pattern and the array factor. From part (a) of the previous problem:

$$S(\theta) = S_e(\theta)F_a(\theta) = 4S_0 \cos^2 \theta \cos^2 \left[\frac{\pi}{8}(4 \cos \theta + 1) \right].$$

This function has a maximum value of $3.52S_0$ and it occurs at $\theta_{\max} = \pm 135.5^\circ$. The maximum must be found by trial and error. A plot of the normalized array antenna pattern is shown in Fig. P9.33(b).

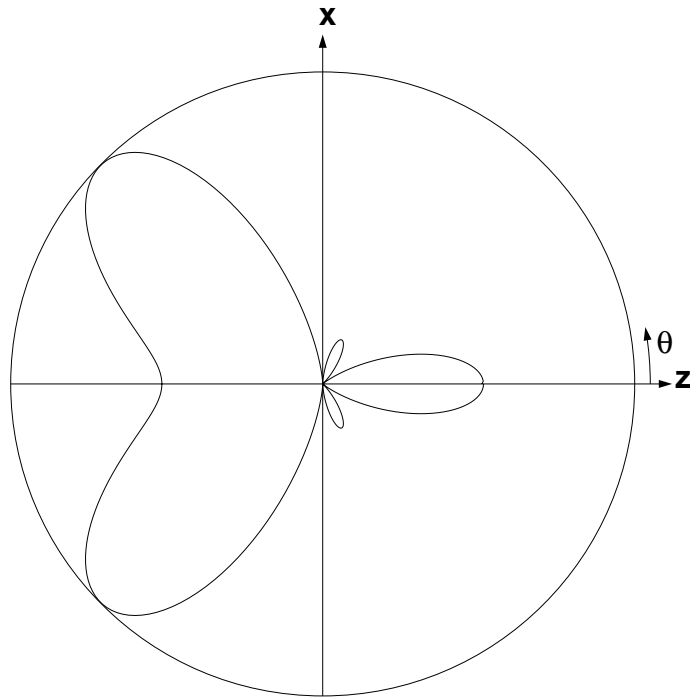


Figure P9.33: (b) Pattern factor in the elevation plane of the array in Problem 9.33(a).
